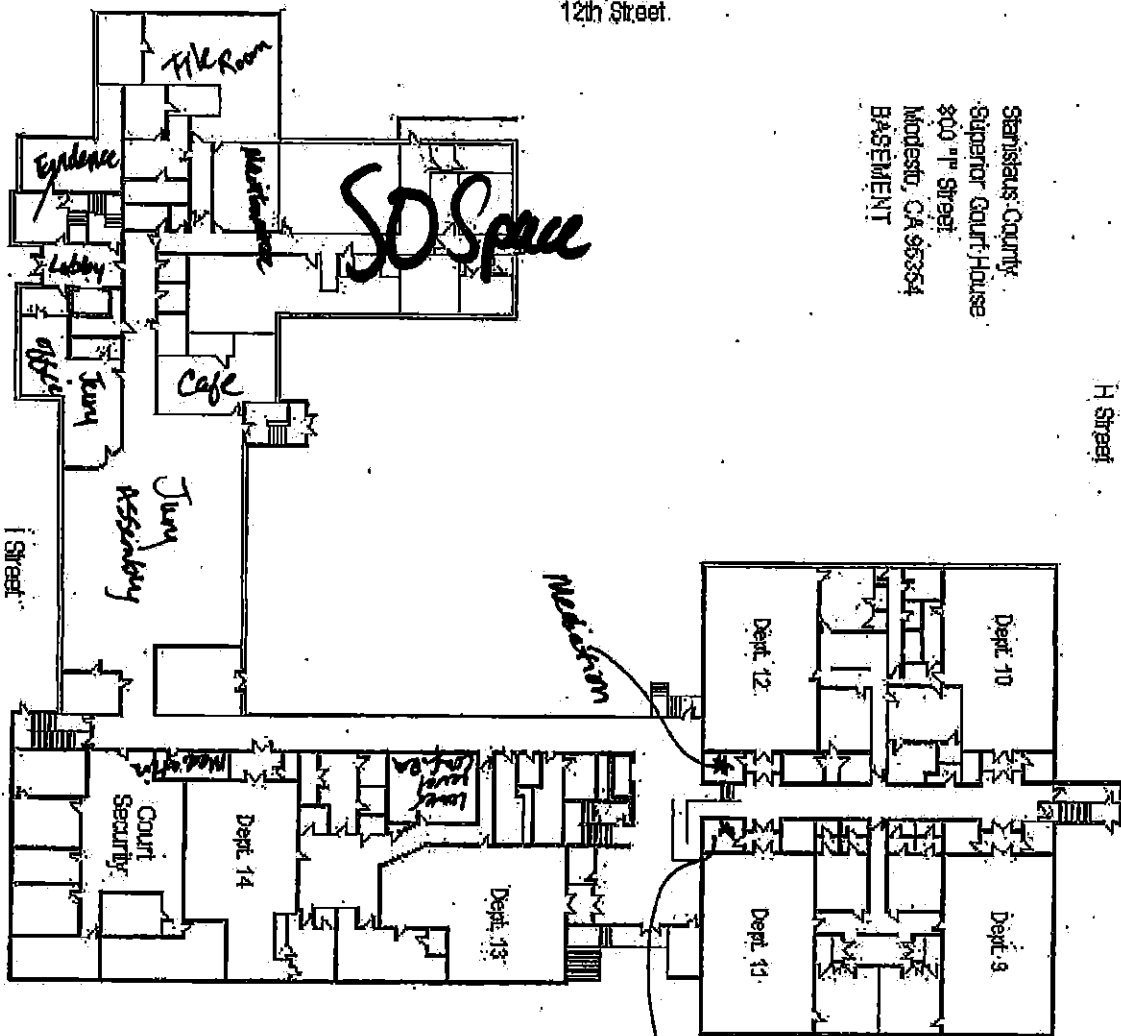


Stanislaus County
Superior Court House
800 11th Street
Modesto, CA 95354
BASEMENT

H Street

12th Street

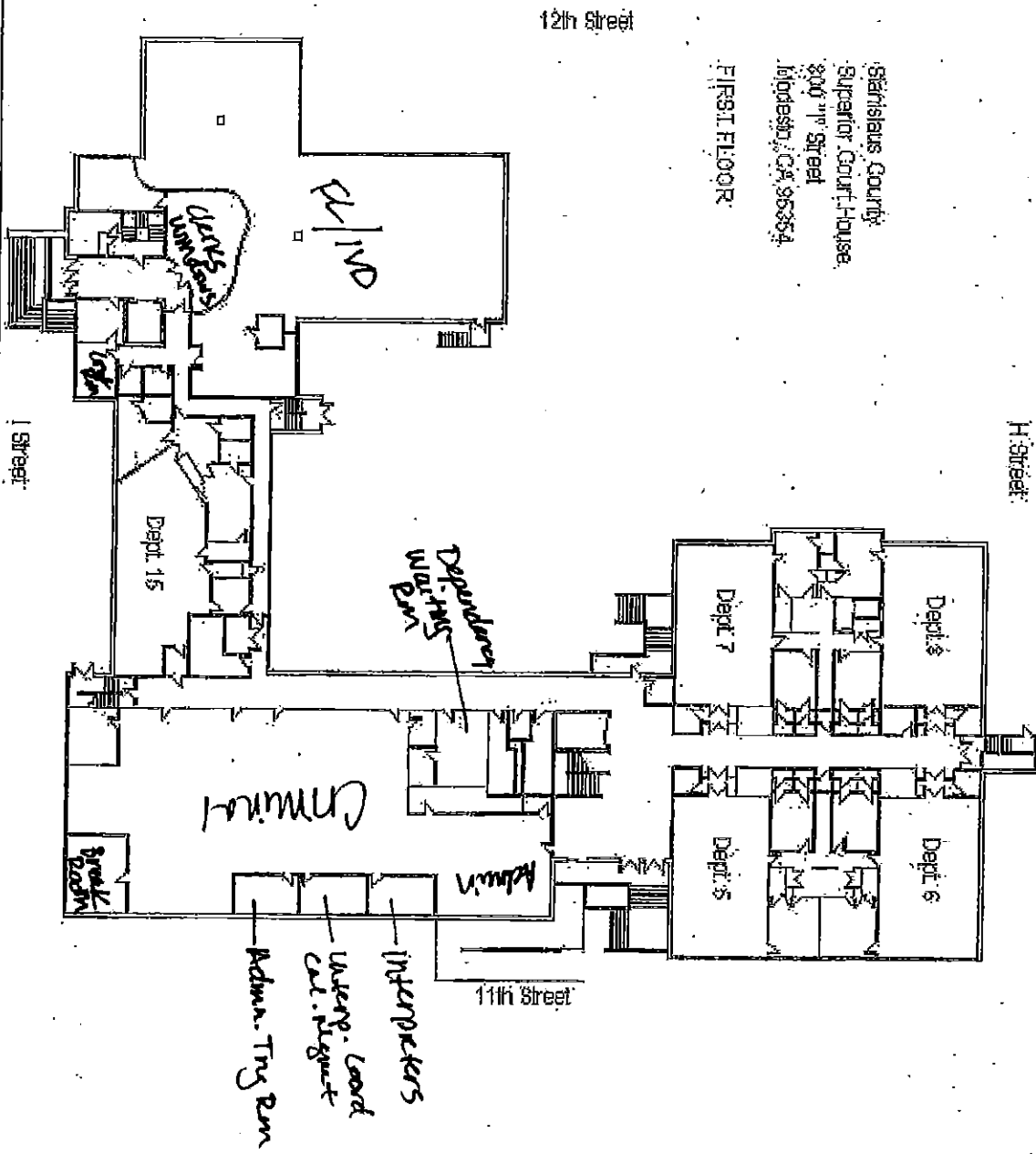


11th Street

85,000 sq. ft

Stanislaus County
Superior Court House
300 11th Street
Modesto, CA 95354

FIRST FLOOR

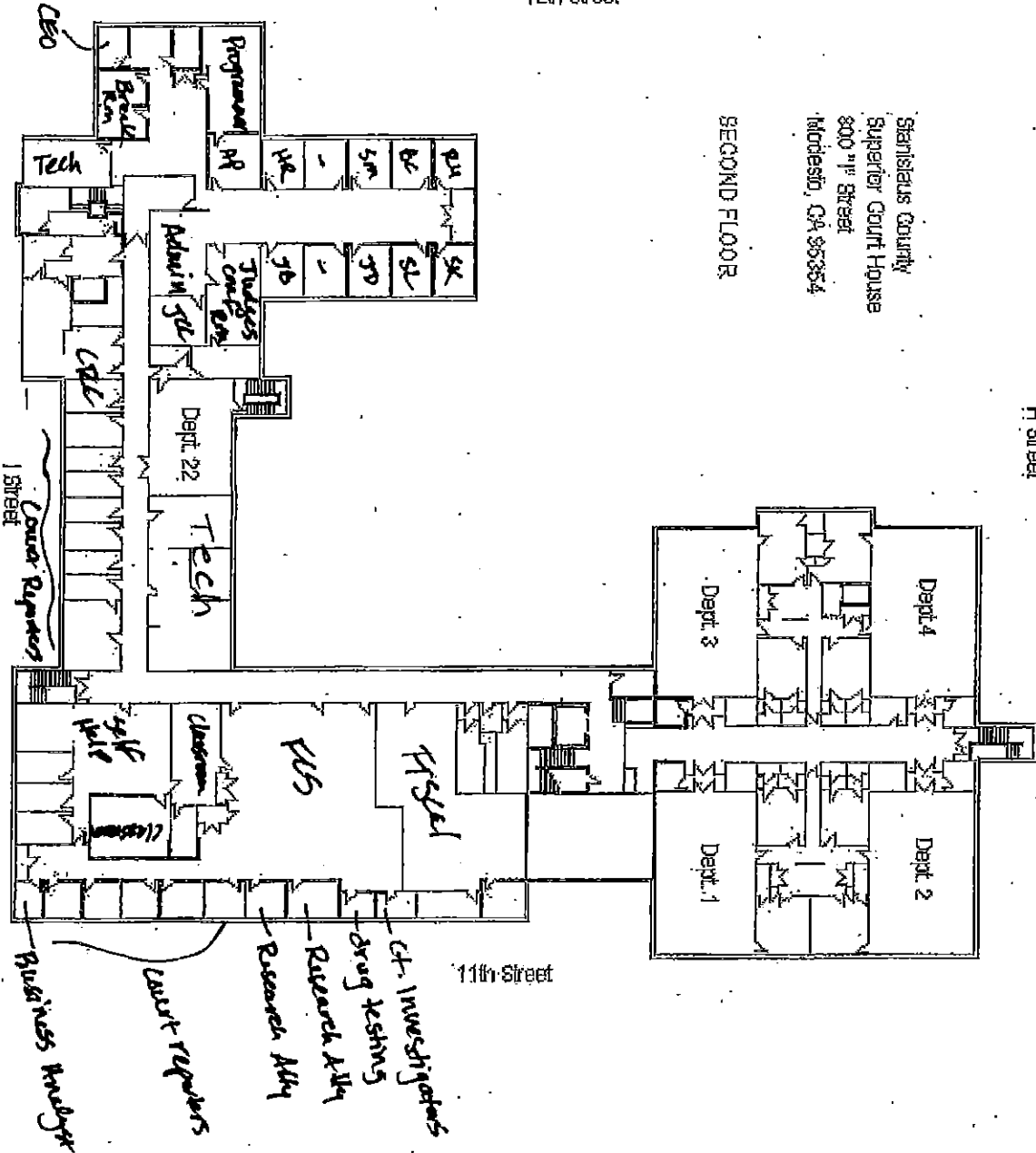


12th Street

SECOND FLOOR

Stanislaus County
Superior Court House
800 1st Street
Merced, CA 95354

H Street



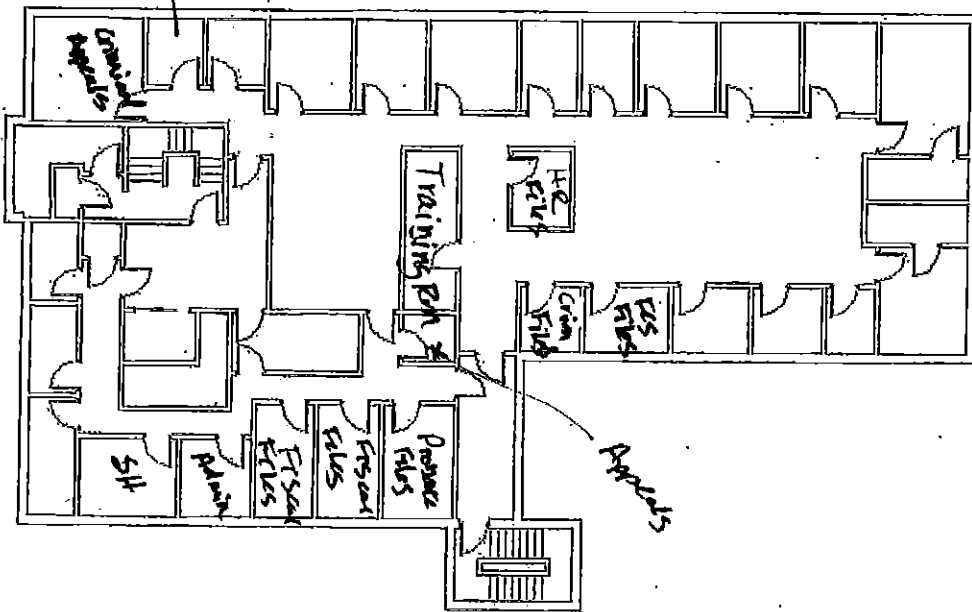
11th Street

Stetson County
Superior Court House
808 7th Street
Mooresville, NC 28654

THIRD FLOOR
Storage

12th Street

H Street

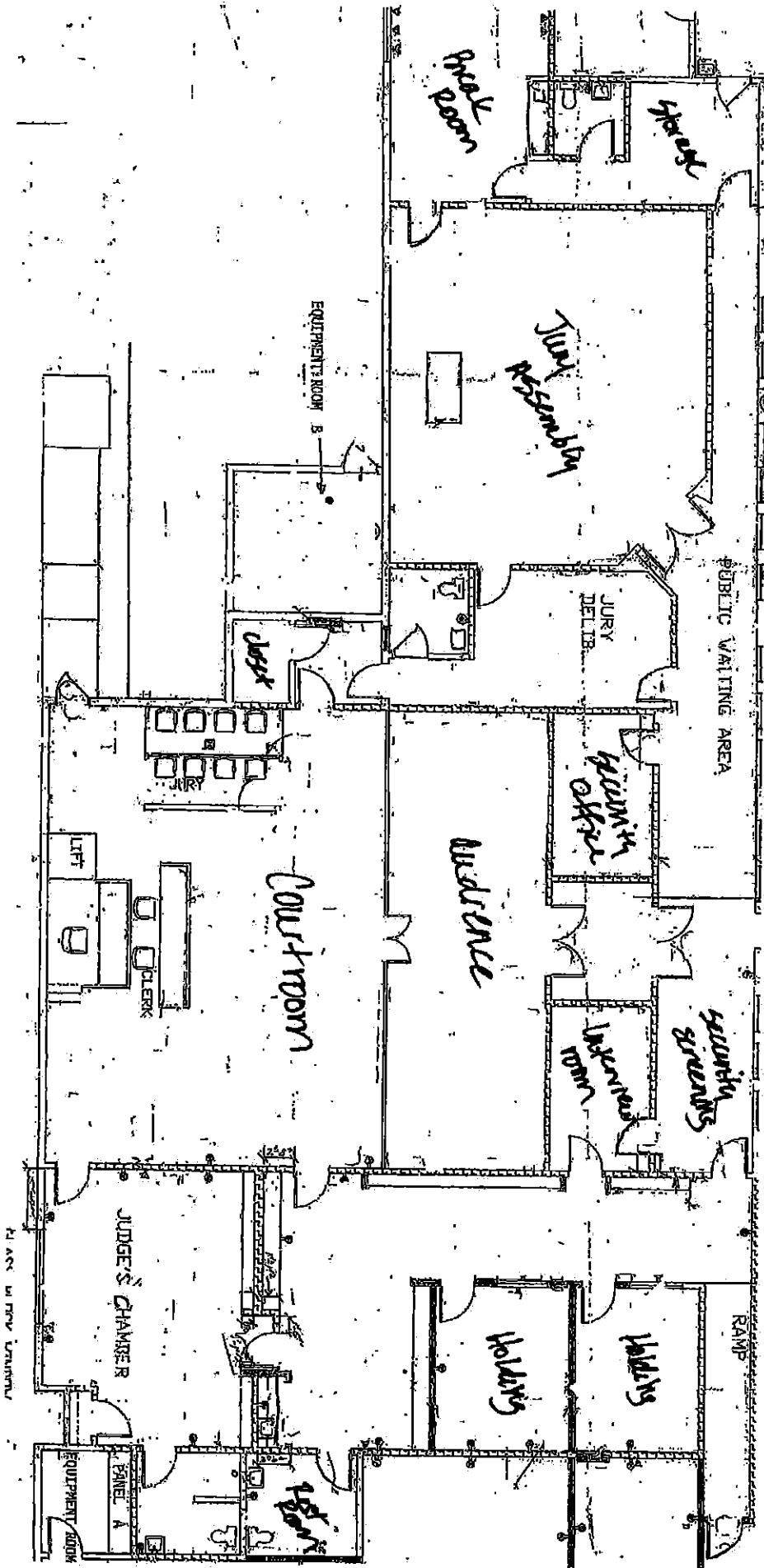


Location

Appraisals

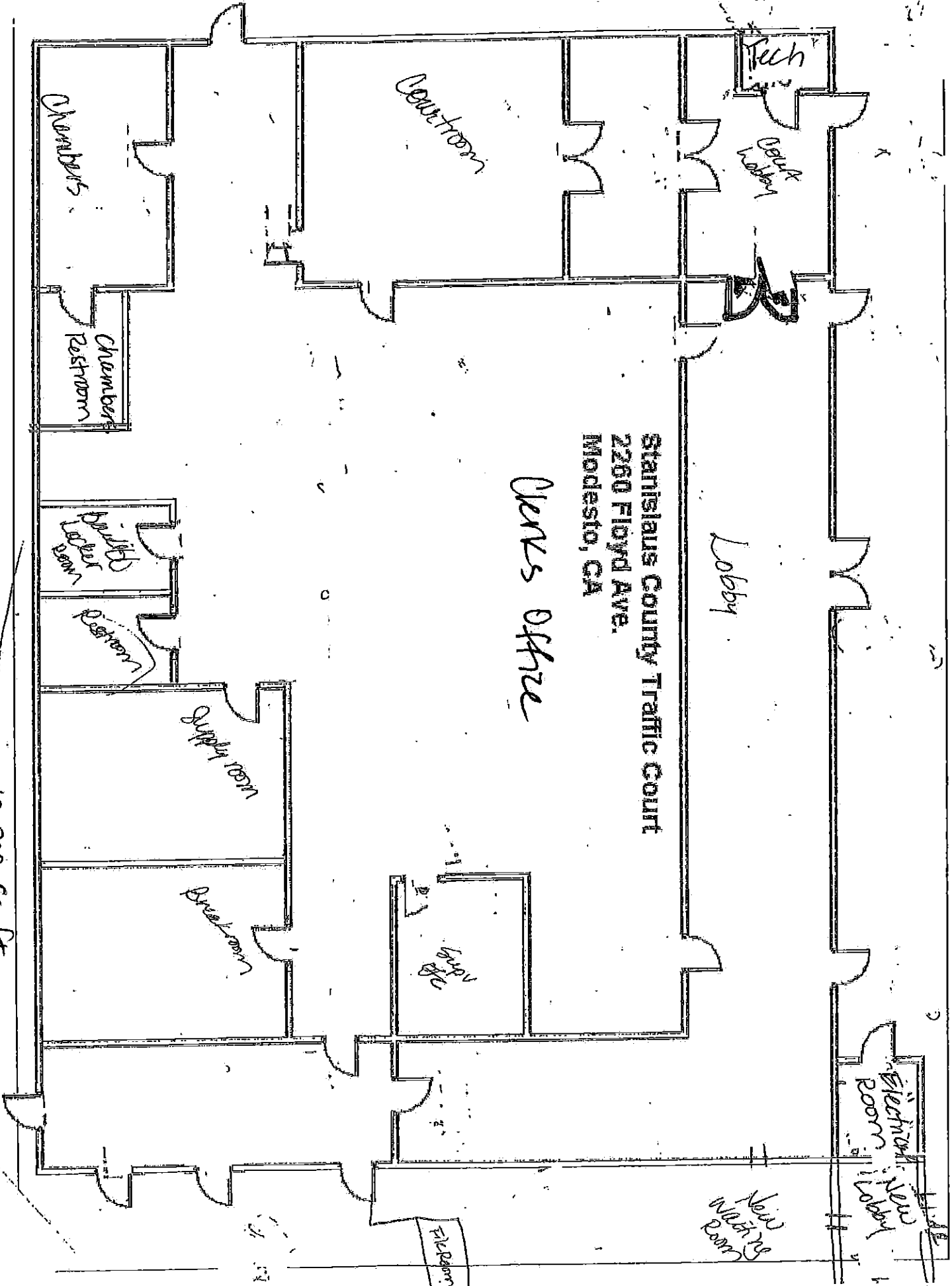
11th Street

I Street



6,300 sq. ft.

DEPT 26



Stanislaus County Traffic Court
2260 Floyd Ave.
Modesto, CA

Clerks Office

Lobby

Courtroom

Tech

Deputy Warden

Chambers

Chambers Restroom

Quintin Barber Restroom

Restroom

Supply room

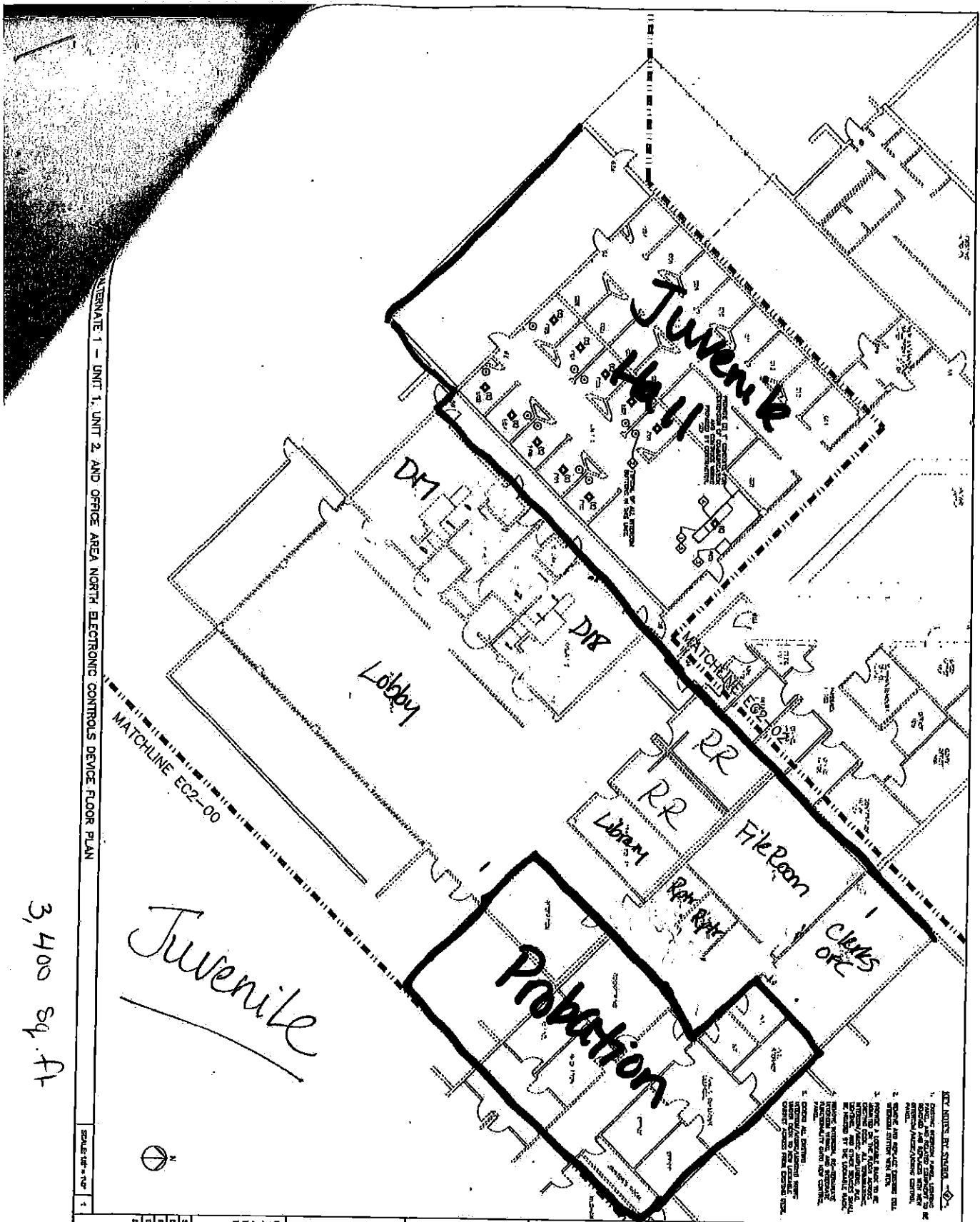
Break room

File Room

New Waiting Room

Electrician's Room

10,200 Sq. Ft.



ALTERNATE 1 - UNIT 1, UNIT 2, AND OFFICE AREA NORTH ELECTRONIC CONTROLS DEVICE FLOOR PLAN

3,400 sq. ft.

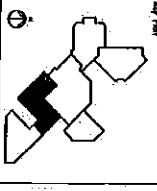
Juvenile

Probation

- KEY: ADJUST BY SYMBOL
- 1. EXISTING EQUIPMENT TO BE REMOVED OR RELOCATED TO BE IDENTIFIED BY A DASHED LINE WITH AN 'X' MARK.
 - 2. NEW EQUIPMENT TO BE IDENTIFIED BY A SOLID LINE WITH A 'P' MARK.
 - 3. ROOMS TO BE REMOVED TO BE IDENTIFIED BY A DASHED LINE WITH A 'D' MARK.
 - 4. ROOMS TO BE ADDED TO BE IDENTIFIED BY A SOLID LINE WITH A 'A' MARK.
 - 5. ROOMS TO BE RENOVATED TO BE IDENTIFIED BY A SOLID LINE WITH A 'R' MARK.
 - 6. ROOMS TO BE RELOCATED TO BE IDENTIFIED BY A SOLID LINE WITH A 'M' MARK.
 - 7. ROOMS TO BE RELOCATED TO BE IDENTIFIED BY A SOLID LINE WITH A 'C' MARK.
 - 8. ROOMS TO BE RELOCATED TO BE IDENTIFIED BY A SOLID LINE WITH A 'S' MARK.
 - 9. ROOMS TO BE RELOCATED TO BE IDENTIFIED BY A SOLID LINE WITH A 'T' MARK.
 - 10. ROOMS TO BE RELOCATED TO BE IDENTIFIED BY A SOLID LINE WITH A 'U' MARK.
 - 11. ROOMS TO BE RELOCATED TO BE IDENTIFIED BY A SOLID LINE WITH A 'V' MARK.
 - 12. ROOMS TO BE RELOCATED TO BE IDENTIFIED BY A SOLID LINE WITH A 'W' MARK.
 - 13. ROOMS TO BE RELOCATED TO BE IDENTIFIED BY A SOLID LINE WITH A 'X' MARK.
 - 14. ROOMS TO BE RELOCATED TO BE IDENTIFIED BY A SOLID LINE WITH A 'Y' MARK.
 - 15. ROOMS TO BE RELOCATED TO BE IDENTIFIED BY A SOLID LINE WITH A 'Z' MARK.

Project Number	EC2-01 AL1
Drawn By	A. LAY
Checked By	B. SAUNDERS
Date	10-15-2008

Showing the ALTERNATE 1 - UNIT 1, UNIT 2, AND OFFICE AREA NORTH ELECTRONIC CONTROLS DEVICE FLOOR PLAN

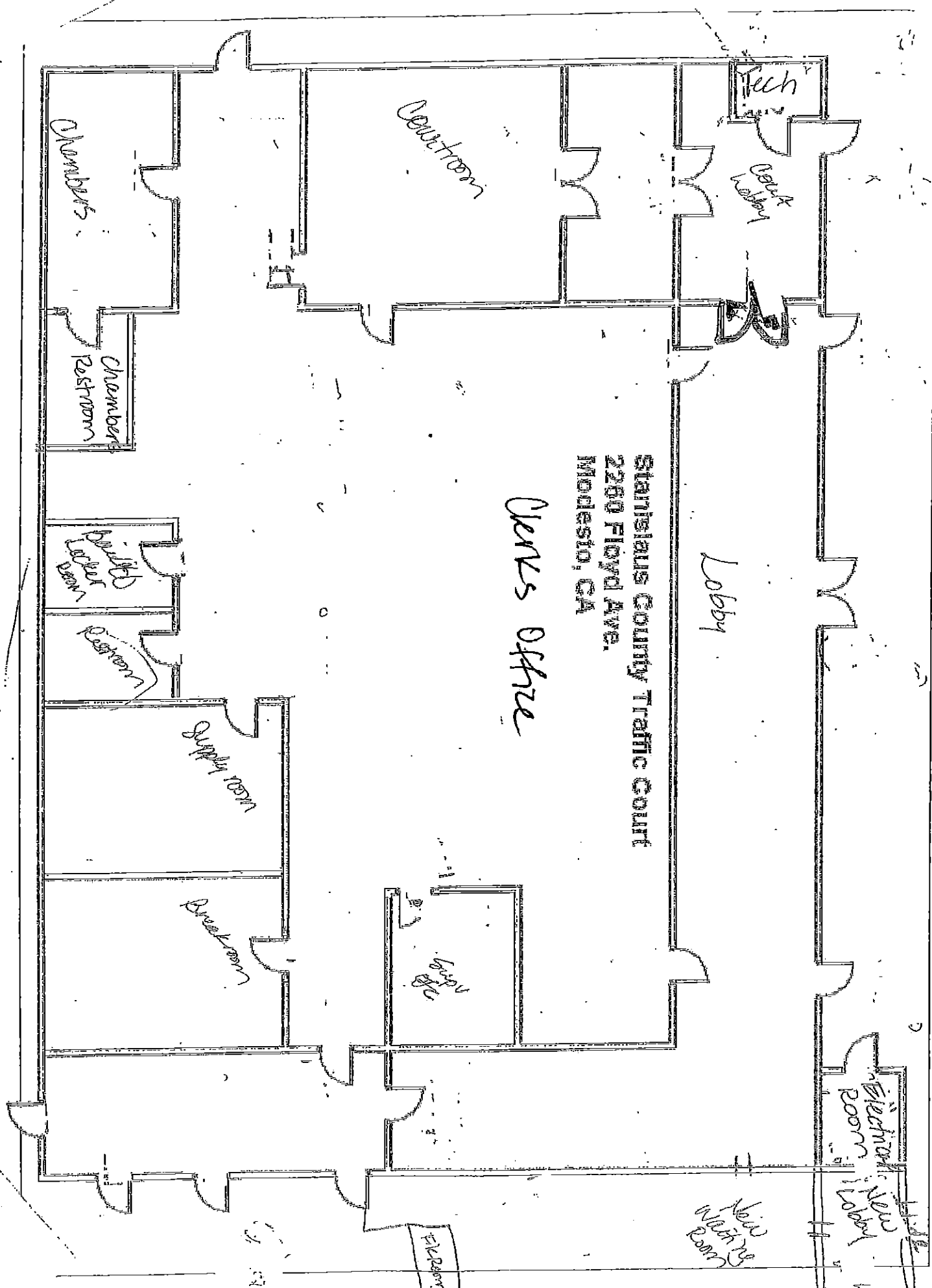


DATE	10/15/08
TIME	10:00 AM
BY	A. LAY
FOR	STANISLAUS COUNTY
PROJECT	JUVENILE HALL
DESCRIPTION	ELECTRONIC SECURITY/LIFE SAFETY SYSTEMS UPGRADE



Project Location:
 STANISLAUS COUNTY
 JUVENILE HALL
 215 BILE CULANE
 KINGSBURY, CA 95223

AMS
 ENGINEERS, INC
 SECURITY and Life Safety Division
 215 BILE CULANE, SUITE 100
 KINGSBURY, CA 95223
 (916) 833-1111
 www.ams-engineers.com



Stanislaus County Traffic Court
2280 Floyd Ave.
Modesto, CA

Deputy's Office

Lobby

Courtroom

Chambers

Chambers
Restroom

Deputy's
Locker Room

Restroom

Supply room

Breakroom

Vestibule

Tech

Clerk's
Lobby

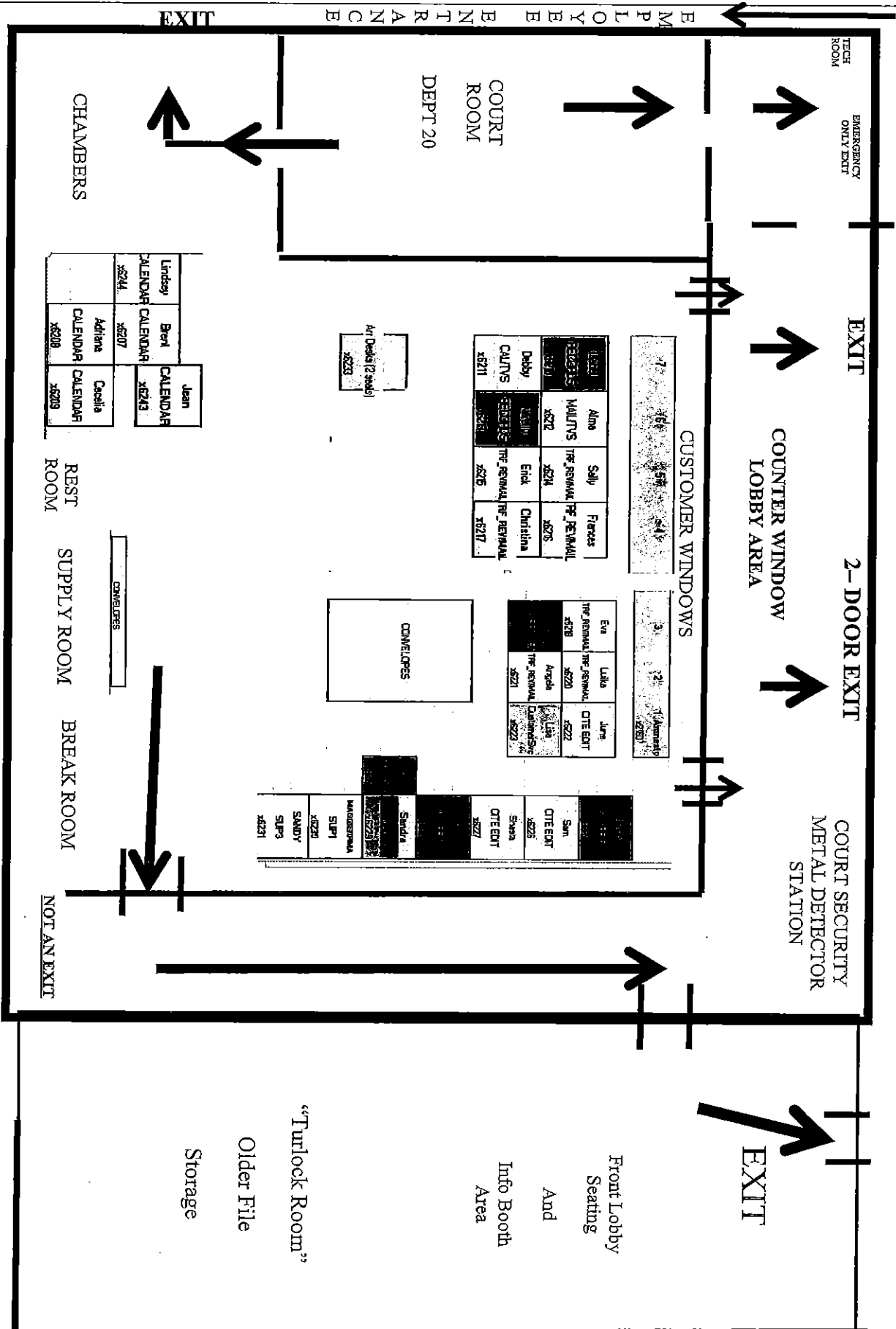
Electronics
Room
Lobby

New
Waiting
Room

Elevator

OUTSIDE TECH ROOM

Public Entrance—Traffic



TECH ROOM
EMERGENCY ONLY EXIT

EXIT

2-DOOR EXIT

COURT SECURITY METAL DETECTOR STATION

EXIT

COUNTER WINDOW LOBBY AREA

CUSTOMER WINDOWS

COURT ROOM

DEPT 20

CHAMBERS

REST ROOM

SUPPLY ROOM

BREAK ROOM

NOT AN EXIT

Alma	Salij	Feres
MAINTS	TRF. REPAIR	TRF. REPAIR
8272	8274	8275
Deby	Enk	Christina
CALITS	TRF. REPAIR	TRF. REPAIR
8271	8276	8277

Eva	Liba	Jurg
TRF. REPAIR	TRF. REPAIR	OTE EXIT
8278	8220	8222
Angela	Christina	Christina
TRF. REPAIR	TRF. REPAIR	TRF. REPAIR
8221	8221	8222

Sam	Sandra
OTE EXIT	OTE EXIT
8226	8227
MANAGEMENT	MANAGEMENT
SUPI	SUPI
8220	8220
SANDY	SANDY
SUPI3	SUPI3
8221	8221

Art Decks (2 walls)
8223

CONVELORES

Lindsey	Bert	Jean
CALENDAR	CALENDAR	CALENDAR
8274	8207	8243
Adriana	Capella	
CALENDAR	CALENDAR	
8208	8209	

CONVELORES

"Turlock Room"

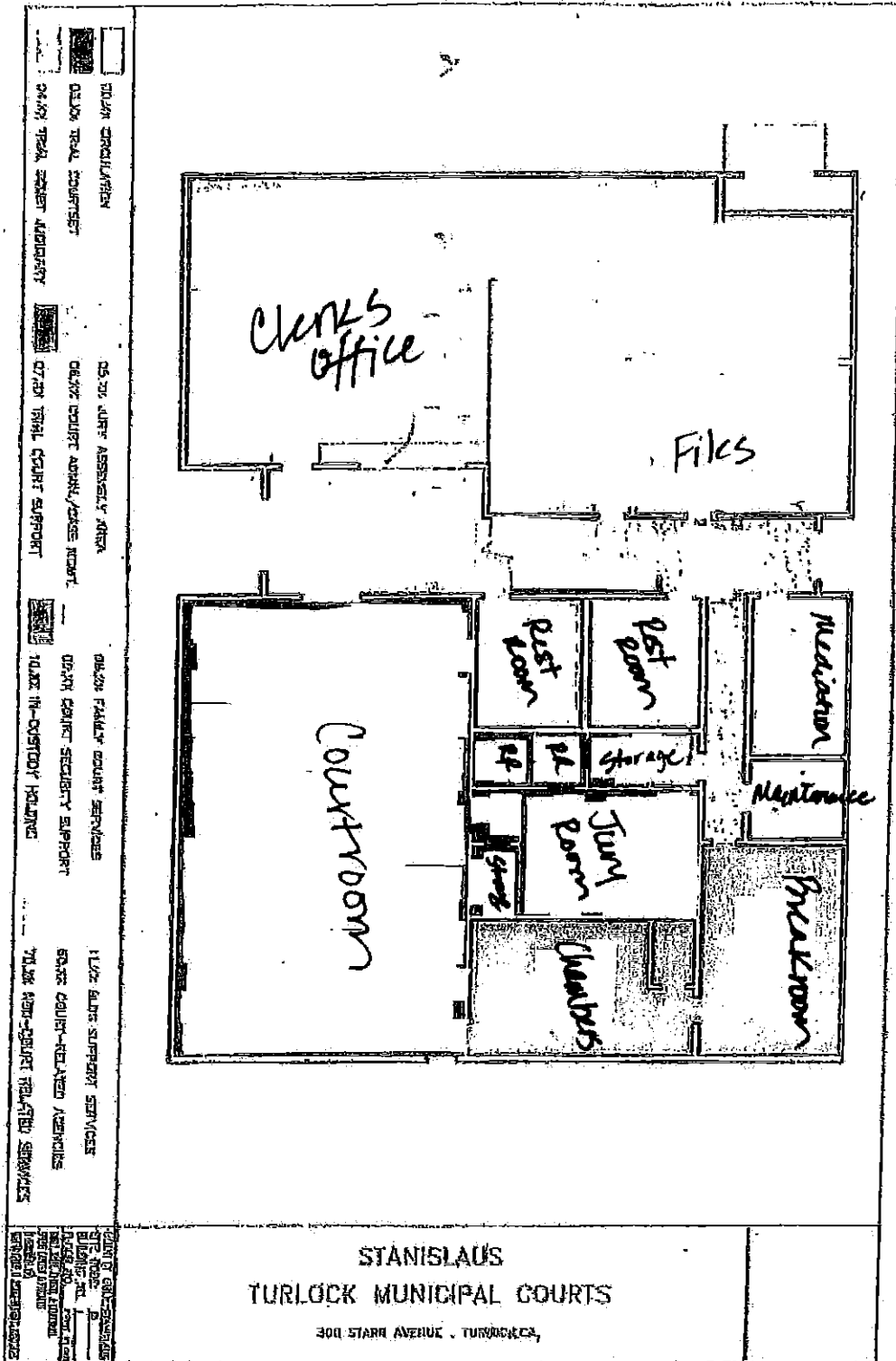
Older File

Storage

Front Lobby Seating And

Info Booth Area

Figure 4.8. Turlock Municipal Court



2,857 sq. ft.